



WORLD-CLASS VENUES

Bangkok has emerged as a global MICE hub, but it's only the beginning of doing business in Thailand. From the mountainous north to the tropical south, Thailand's world-class venues attract hundreds of thousands of visitors each year.



Bangkok Convention Center, Centara Grand, CentralWorld



Choose this venue in the heart of Bangkok for an event that gets to the heart of your business goals. Shaped like a blooming lotus, Bangkok Convention Center boasts some of the most versatile exhibition space in Thailand, with a column-free convention hall and grand ballroom that can accommodate as many as 5,000 delegates. Situated above the popular CentralWorld Mall, beneath the iconic RedSky rooftop lounge, and within a hotel that boasts more than 500 luxurious rooms, Bangkok Convention Center at Centara Grand is your MICE capital in Thailand's capital.



Bangkok International Trade and Exhibition Center (BITEC)



Bangkok International Trade and Exhibition Center, commonly known as BITEC, occupies a 68-acre convenient to both central Bangkok and Suvarnabhumi International Airport. Accommodate up to 20,000 delegates and 100,000 visits inside 6 interconnected column-free halls and 19 flexible meeting rooms. Adding to BITEC's convenience are its dozens of on-site dining venues, its connectedness to Bangkok's Expressway system and its location near Bang Na station, near the eastern terminus of Bangkok's BTS SkyTrain system.

Chiang Mai International Convention and Exhibition Center (CMECC)



Past meets present and future at Chiang Mai International Convention and Exhibition Center, or CMECC, where timeless Lanna design adorns state-of-the-art facilities. With a pristine lake on one side and majestic mountain peaks on the other, CMECC is convenient to both Chiang Mai's international airport and its city center. Host up to 16,000 people in the main conference hall, give presentations in the state-of-the-art multimedia amphitheater or close important business deals in an intimate conference room.



Pattaya Exhibition and Convention Hall (PEACH)

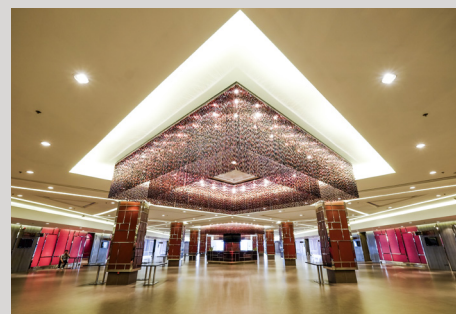


Perched on a hilltop above Pattaya and Jomtien beaches, PEACH provides a MICE experience as sweet as a piece of fruit. Your one-stop shop for doing business on the beach, PEACH boasts column-free exhibitions halls that can accommodate up to 10,000 delegates and a kitchen that can feed more than 6,000 diners. PEACH is as convenient as it is comprehensive – the only thing better than its diverse array of meeting facilities are the five-star hotels and private-beaches located on-site.

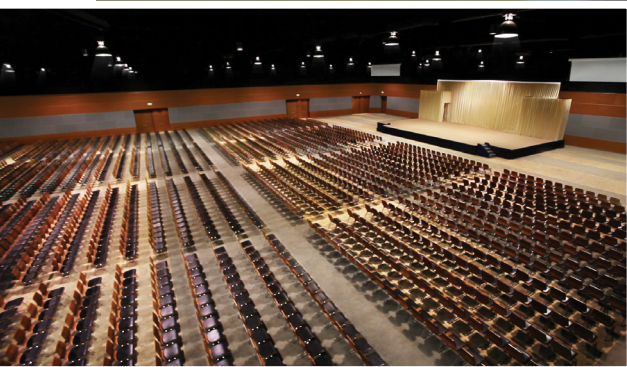
IMPACT Arena, Exhibition and Convention Center



Make a permanent impact on your guests when you meet at IMPACT Muang Thong Thani. Thailand's most versatile venue, IMPACT boasts ISO 50001 Energy Management Systems, plus 140,000 square meters of indoor and outdoor event space for concerts, conventions, exhibitions and galas. IMPACT is as big on convenience as it is on event space, thanks to the Novotel Bangkok IMPACT, which boasts 380 modern, spacious rooms and suites, and the dozens of dining establishments that dot the venue.



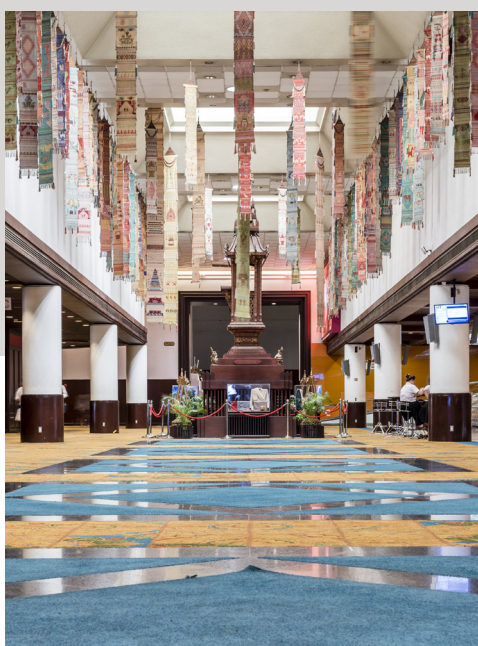
The 60th Anniversary of His Majesty's Accession to the Throne Convention Center



Add some spice to your next MICE event – hold it in Thailand's exotic south! Located in Hat Yai, the commercial hub of southern Thailand, The 60th Anniversary of His Majesty's Accession to the Throne Convention Center balances traditional local design with 21st – century technology and amenities. With more than 15,000 square meters of exhibition space divided into conference rooms multi-function zones and a state-of-the-art convention hall, you're sure to feel like royalty when you do business here.



QSNCC, Queen Sirikit National Convention Center



You'll feel like royalty when you host your next event at QSNCC. Designed to blend traditional and contemporary Thai architecture, QSNCC boasts more than 65,000 square meters of multi-functional event space. QSNCC's beautiful setting amid a well-landscaped Bangkok lake is not only beautiful, but reflects the venue's commitment to green ideals. It's Thailand's green-certified MICE venue, with an ISO 50001 certification for Energy Management and ISO 20121 certification for Event Sustainability.



Royal Paragon Hall, Siam Paragon



Siam Paragon is the diamond of Bangkok's shopping district – and Royal Paragon Hall is its sparkling crown jewel. Bangkok shines bright like a diamond as you look out onto the city from the venue's spacious 12,000 square feet, which comprises three halls, six breakout rooms and a VIP room to accommodate over 5,000 guests. Royal Paragon Hall is a rare find as far as venues goes, but its location just steps from Siam station of the BTS SkyTrain proves that not all treasures are out of reach.



ONE-OF-A-KIND THAI VENUES

Choose one of the Kingdom's uniquely Thai venues to make your event as enchanting as the Kingdom itself.
Feel like royalty in a former palace, or give your meeting a timeless feel in a historical building.



Chakrabongse Villas



When you host your next event at Chakrabongse Villas, the only thing brighter than the shimmering moonlight on the Chao Phraya River is your business future. Whether you meet inside the main house, where Thai princes once dined, or hold a reception on a spectacular riverside terrace, you'll go down in MICE history when you choose Chakrabongse Villas.



Sukhothai Historical Park



Leverage 800 years of Thai heritage at Sukhothai Historical Park, a timeless venue that commemorates one of history's most powerful civilizations. Host up to 600 delegate in state-of-the-art meeting spaces, impress them with a stroll through exquisite palaces and delight them with the convenience of Sukhothai Treasure Resort & Spa, a five-star boutique hotel just minutes away.



Grand Postal Building (Central Post Office)



Deliver the most successful event of your career at Bangkok's Grand Postal Building, a colonial-era post office that's still in operation. Centered around the versatile, 1,072 square meters Postal Heritage Hall, the Grand Postal Building blends modern luxury and timeless style, for parties, product launches, weddings and any other type of event you can imagine.



Aksra Theatre



The only thing better than doing business at Askra Theatre, located inside Pullman Bangkok King Power, is using its world-class entertainment space to take in a traditional Thai performance. With space for more than 600 guests, and several exhibition spaces, banquet halls and meeting rooms, Askra Theatre performs to meet even royal expectations.



Thailand **CONNECT**



www.businesseventsthailand.com