



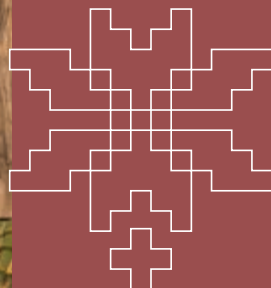
อีสานมิเซ่  
ISAN MICE

# KHON KAEN

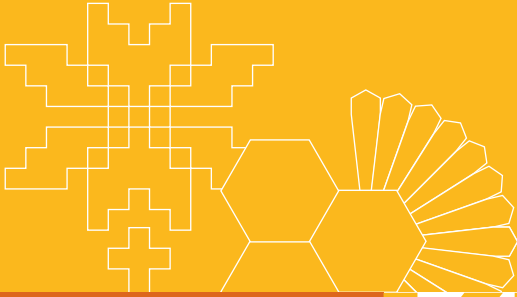


# SMART AND

# DYNA MIC CITY







# ISAN MICE KHON KAEN

Khon Kaen has been recognized by the World Crafts Council as the Global City of Mudmee Silk. It awakens the senses, immersing visitors in the enchanting charm of community life. It serves as a platform for organizations to study and appreciate the heritage of traditional crafts, learn about the small-scale silk industry from its origins to its current state, and witness the transmission of knowledge through generations for over a century. The modernity of the city is reflected in its diverse array of establishments, including restaurants, farms, cafes, and multimedia spaces, offering a variety of tastes and experiences. This creates new definitions for MICE travelers, ensuring a contemporary and unforgettable journey.

# KHON KAEN FUNFACT



Khon Kaen is a province with **the 6<sup>th</sup> largest area** in the northeastern region of Thailand.



The first **MICE CITY** in the northeastern region.

Being the 10<sup>th</sup> MICE destination of ASEAN.



There is **1 international airport** in the province.

The city is developing under the "**Khon Kaen Model**," a paradigm of smart city development.

**5** factors contribute to making Khon Kaen **the most outstanding city in the region**:


- 1 Transition to a smart city.
- 2 Business opportunity creation.
- 3 Development of both old and new parts of the city.
- 4 Advanced medical and educational centers.
- 5 Serving as a gateway to various regions, connecting Thailand, Myanmar, and Vietnam.


# Convention Center in Khon Kaen

## 1

### Khon Kaen International Convention and Exhibition Center

The modern and internationally renowned conference and exhibition center has a total floor space of 7,510 square meters. It accommodates more than 10,000 attendees.

 222 Moo 12, Mittraphap Road, Mueang Khon Kaen District, Khon Kaen Province, 40000


 +66 9 1774 9230

 <https://www.kice-center.com/>

## 3

### Khon Kaen Hall

The purpose-built convention center spans over 2,540 square meters and is located on the 5<sup>th</sup> floor of Central Khon Kaen. It is fully equipped with state-of-the-art stage, lighting, sound, and effects systems, and it is seamlessly integrated with the shopping center.


 99, 99/1 Sri Chan Road, Tambon Nai Mueang, Mueang Khon Kaen District, Khon Kaen Province, 40000

 +66 4300 1000


## 2

### Convention Hall, Avani Khon Kaen Hotel & Convention Centre

The conference center can accommodate up to 2,500 attendees and is located just 15 minutes away from Khon Kaen International Airport.

 999 Prachasamoson Road, Mueang Khon Kaen District, Khon Kaen Province, 40000


 +66 4320 9888

 <https://www.avanihotels.com/en/khon-kaen>

## 4

### Golden Jubilee Convention Hall

The main conference hall at Khon Kaen University is a two-story building with a total floor area of 21,160 square meters.

 123 Mittraphap Road, Mueang Khon Kaen District, Khon Kaen Province, 40002

 +66 4320 2500

 <https://goldenjubileeconventionhall.com/>



## Ban Hua Fai Community

Fascinated by the intricate artistry and vibrant hues of the fabric patterns crafted by the community, from mulberry cultivation and silk farming to the complete process of weaving exquisite silk fabric. There are workshops on fabric dyeing, local cuisine preparation, including dishes made from mulberry leaves as the main ingredient, providing a delightful culinary experience.



### MICE Checklist

- Maximum capacity: 60 pax
- Multipurpose pavilion available for meetings.



### Contact

46 Moo 3, Tambon Po Daeng,  
Chonnabot District, Khon Kaen  
Province, 40180  
☎ +66 8 1729 6025  
📍 สุภาวดีโนนไทร (Only in Thai)



# Ban Nong Bua Noi Community

With textiles dating back over 130 years still woven into the fabric of the community, the production process of silk stretches from its origins to its completion. Starting from mulberry cultivation, silkworm rearing, and silk spinning, until the final weaving stage, particularly renowned for the intricate Hite patterned silk. Twelve Hite patterned fabrics have received national awards.



## MICE Checklist

- Maximum capacity: 100 pax
- Multipurpose pavilion available for meetings.



## Contact

Ban Nong Bua Noi Moo 8, Tambon Sawk Nok Ten, Phon District, Khon Kaen Province, 40120  
☎ +66 6 4709 3657,  
+66 8 5646 3008





## MEKIN FARM

Explore the Mekin Farm's garden area, a mixed agricultural garden allocated on just 4 Rai of land. The space can be transformed into various purposes, including a meeting venue amidst lush surroundings, team-building activities. Recently, a homestay experience has been introduced, allowing guests to immerse themselves in a cozy home-like atmosphere, which adds to the charm of Mee Kin Farm.



### MICE Checklist

- Multipurpose pavilion available for meetings.: 50 pax
- Workshop pavilion available.
- Cafe and restaurant on-site.
- Features rice fields, shaded areas, open spaces, and grassy fields suitable for various activities.
- Can organize incentive tours.



### Contact

155 Moo 1, Ban Khok Klang, Tambon Chorakhe, Nong Ruea District, Khon Kaen Province, 40240

☎ +66 6 1695 9926

📍 มีถิ่นพำนัก (Only in Thai)





## Focus Arena

Focus Arena is the comprehensive esports competition center of the Northeast region and Southeast Asia, spanning over 400 square meters in the heart of Khon Kaen city. Equipped to host meetings in the sophisticated ambiance of a stadium-like esports complex, it serves as the hub for gaming competitions, training facilities, skill development, online business learning centers, and a global meeting point for exchanging esports experiences.



### MICE Checklist

- Maximum capacity: 100 pax
- Provides learning opportunities for esports and conducts meetings with comprehensive equipment.
- Features a stadium suitable for hosting meetings.



### Contact

161/25-26, Moo 14, Mittraphap Road, Mueang Khon Kaen District, Khon Kaen Province, 40000  
☎ +66 8 1661 0099, +66 8 2741 6655  
📍 CIZE.esports  
🌐 <https://www.focusarena.co/>





## Field MUSH Fun

The farm offers a space for natural vegetable cultivation, using self-prepared soil made from rain tree leaves, cow and pig manure, raw clay, and various microbial formulas. It combats pests using traps and biological controls, while utilizing biochar to maintain soil moisture and preserve nutrients and carbon. All of these practices can be transformed into workshops, including toxin-free vegetable cultivation, cooking with fresh vegetables, or creating green garden trays.



### MICE Checklist

- Maximum capacity: 30 pax
- Provides a pavilion for meetings or workshops.



### Contact

3/3, Tambon Nai Mueang, Mueang Khon Kaen District, Khon Kaen Province, 40000

☎ +66 6 5592 2351

📍 Field MUSH Fun ทุ่งอีดสวน  
ความสุขปลอดสาร (Only in Thai)





## The Wall Khon Kaen Family Space

From Phra Thammakhan Pharmacy, which later evolved into a printing house, Phra Thammakhan Printing House, and eventually renovated into a space that now houses restaurants, cafes, art schools, and more. Additionally, it features a museum that narrates the history of the business and preserves rice stored in various corners of the shops, along with stories that are shared and circulated.



### MICE Checklist

- Maximum capacity: 40 pax
- Provides a courtyard that can be converted into a small event space.
- Features a museum within the project.
- a café and restaurant in the area



### Contact

95/12, Ruen Rom Road, Tambon Nai Mueang, Mueang Khon Kaen District, Khon Kaen Province, 40000  
 ☎ +66 8 9710 8382  
 📍 [thewallkhonkaenfamilyspace](https://www.facebook.com/thewallkhonkaenfamilyspace)





## NABNAM SPACE

Nabnam Space is a unique healing space located about 7 kilometers away from Khon Kaen city, on over 27 Rai of forested land surrounded by natural ponds. It offers comfortable corners, outdoor seating under large shady trees, and indoor seating areas with a variety of books, photographs, and soothing beverages like blended teas and excellent coffee. There are also green areas ready to accommodate wellness activities and inspiring art events.



### MICE Checklist

- Maximum capacity: 50 pax
- Small meeting room available with seating for 10.
- Medium-sized pavilion for activities or workshops.
- Beverage and bakery services provided.



### Contact

Ban Nabnam 18 Moo 12, Ban Song Puei, Khon Kaen-Chiang Yuen Road, Mueang Khon Kaen District, Khon Kaen Province, 40000

+66 9 9463 2559

☎️ ภาษาไทยเท่านั้น (Only in Thai)



## Rak An Coffee

Indulge in the nostalgic scent of Thai-Chinese old-style homes, which had been silent for over a decade, transitioning from a pig farm into a museum and a guest reception area. It showcases the value of old wooden houses of the Chinese community around the central shrine of Khon Kaen city. The house itself was built with rich wooden components since the year 1955, along with narrated knowledge about the community’s history and local architecture.



### MICE Checklist

- Maximum capacity: 20 pax
- Upper floor available, convertible into a meeting room.
- Provides snacks and beverages.



### Contact

28 Darusamran Road, Tambon Nai Mueang, Mueang Khon Kaen District, Khon Kaen Province, 40000  
 ☎ +66 9 5661 0199  
 📍 Rak An Coffee



## The Dinosaur Research Centre and Museum, or Phu Wiang Dinosaur Museum

It is renowned for its dinosaur discoveries, including the first dinosaur bone found in Thailand and the identification of up to five new dinosaur species worldwide. Established in 2001, it is considered Thailand's first paleontological museum, housing evidence for learning and research, including well-preserved dinosaur fossils. Visitors can enjoy the museum's exhibitions, dinosaur-themed photo spots, an honorary dinosaur park, and exhibition halls.



### MICE Checklist

- Maximum capacity: 100 pax
- Grass field available for events.
- Theater room and central hall suitable for meetings.
- Workshop for tie-dyeing fabrics and making dinosaur dolls.



### Contact

The Dinosaur Research Centre and Museum (Phu Wiang Dinosaur Museum), Tambon Nai Mueang, Wiang Kao District, Khon Kaen Province, 40150  
 ☎ +66 8 1846 2760, +66 8 1845 8628, +66 8 1544 3802  
 📍 พิพิธภัณฑ์ไดโนเสาร์ภูเวียง (Only in Thai)



# Art Centre Khon Kaen University

This space is a cultural hub located near Bueng Sietan, on the western bank. Shaped like a traditional Isaan rice barn, it serves as both an information center and a learning hub, organizing cultural activities related to Isaan arts and culture. The gallery consists of three main zones divided into floors. The third floor showcases artworks from various national artists and artisans. The second and first floors host rotating exhibitions.



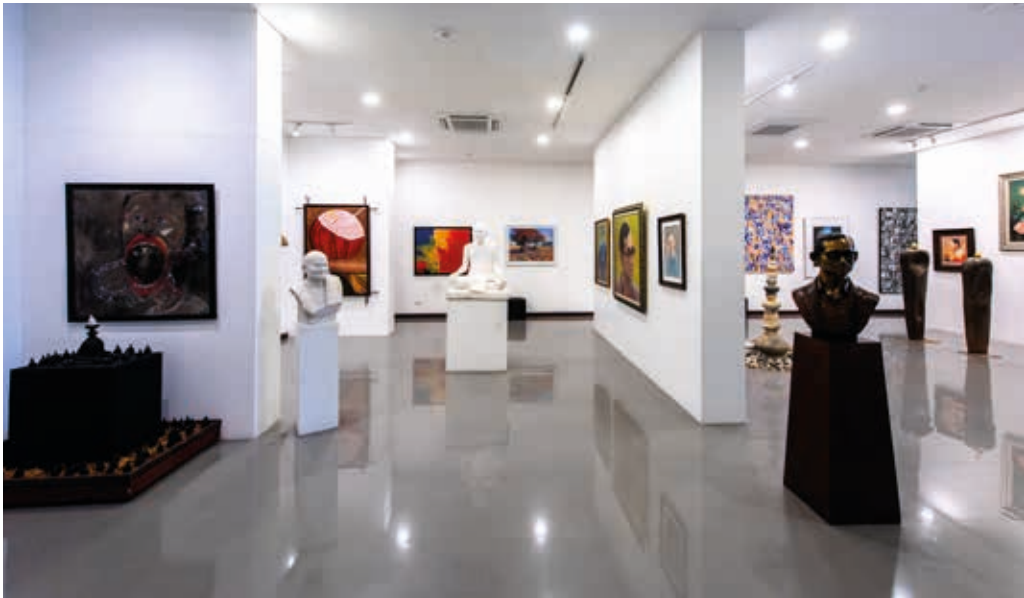
## MICE Checklist

- Maximum capacity: 300 pax
- Reception hall suitable for event organization.
- Open space convertible into small event areas.
- Small meeting room available.



## Contact

Khon Kaen University 123  
Mittraphap Road, Mueang Khon  
Kaen District, Khon Kaen Province,  
40002  
☎ +66 4 3332 760  
📍 หอศิลป์ มหาวิทยาลัยขอนแก่น  
(Only in Thai)  
🌐 <http://cac.kku.ac.th>





## The Treasury Museum

The museum is an activity space designed for creativity with Universal Design facilities and serves as a significant learning resource on Thai currency. It reflects the economic and social development of the northeastern region and Khon Kaen province from the past to the present. The museum comprises five exhibition rooms, including the New Era Isan Room, the Thai Wisdom Heritage Room in Northeast Thailand, and exhibitions narrating the story of Khon Kaen city through interactive multimedia.

### MICE Checklist

- Maximum capacity: 200 pax
- Exhibitions with bilingual presentations in both Thai and English, with a capacity of approximately 20 people per session.
- Facilities include multipurpose space for events or exhibitions.
- Outdoor spaces are available.

### Contact

393 Mueang Road, Tambon Nai Klang Mueang, Mueang Khon Kaen District, Khon Kaen Province, 40000  
 ☎ +66 4330 6167  
 📍 พิพิธภัณฑ์ธนารักษ์ จังหวัดขอนแก่น (Only in Thai)  
 🌐 <https://trdmuseumkhonkaen.treasury.go.th/home/>



# Regional Observatory for the Public, Khon Kaen

The newly established landmark or the 4<sup>th</sup> regional observatory in Thailand, which serves as a learning center for astronomy, study, research, and development in astronomy through modern interactive media. The main highlight is the observatory with a telescope installed in a fiber-glass dome that can open up to 180 degrees, providing a simulated full-dome digital sky system. There are also realistic astronomy films rotating monthly, as well as training camps and star party nights to observe celestial phenomena.



## MICE Checklist

- Maximum capacity : 100 pax
- Sky Theater with 80 seats
- Outdoor space suitable for events
- Groups can make advance reservations



## Contact

555 Moo 2, Tambon Khuean Ubolratana, Ubolratana District, Khon Kaen Province, 40250  
☎ +66 6 3892 1854  
📍 หอดูดาวเฉลิมพระเกียรติ 7 รอบ พระชนมพรรษา ขอนแก่น (Only in Thai)





## The Little Giant Puppet Show, Sa Watthi (Sa Watthi Ratsadonrangsit) House

Derived from local wisdom, community history, and ancient cultural heritage, the Little Giant Puppet Show of Sa Watthi combines these elements into a unique folk performance. It serves as an inspiration for the students of Sa Watthi School, who come together to train as puppeteers, preserving and promoting the art of puppetry.



### MICE Checklist

- Maximum capacity: 100 pax
- Pavilion with versatile setup for meetings
- Capability to perform shows at various locations



### Contact

Sa Watthi School Moo 21, Ban Sa Watthi Village, Tambon Sa Watthi, Mueang Khon Kaen District, Khon Kaen Province, 40000

☎ +66 8 7640 6718

📍 เกี่ยววาระดีวิทีสุบ, วัดไชยศรี ลาระดี (Only in Thai)



# Krua Supanniga by Khunyai Somsie

A hidden oasis in the heart of Khon Kaen, this place is more than just a boutique villa accommodation. It boasts a large, cozy restaurant with an elegant ambiance, offering authentic Thai recipes passed down from Grandma Somsie. The menu features a fusion of coastal and northeastern Thai cuisines, blending traditional flavors with modern presentation.



### MICE Checklist

- Maximum capacity: 100 pax
- Sub-conference rooms available for meetings
- Ability to organize cooking class workshops
- Outdoor area for special events



### Contact

130/9 Phothisan Road, Tambon Nai Muang, Mueang Khon Kaen District, Khon Kaen Province, 40000  
☎ +66 6 3424 1665  
🌐 supannigahome





## KAEN

Kaen offers contemporary Thai cuisine infused with the aroma of northeastern local flavors in a “Casual Fine Dining” style. Beyond selecting only the finest, freshest ingredients from the local community and northeastern region, Kaen continually evolves its menu according to the seasons. In the pursuit of excellence and innovation, the restaurant also presents a blend of traditional and modern northeastern dishes, available in both à la carte and set menu options.



### MICE Checklist

- Maximum capacity : 20 pax
- Ability to organize catering off-site



### Contact

Soi Adulyaram 3, Mueang  
Khon Kaen District, Khon Kaen  
Province, 40000  
☎ +66 8 6222 2203  
📍 ถนน 1 KAEN





## Heun Kham Nang

This isn't just a restaurant; it's a home that opens its doors to guests, serving as a showcase for authentic Isan-style cuisine in the "Chef's Table Authentic" style. The restaurant serves as an educational platform, offering insights into traditional Isaan cuisine to help outsiders better understand and appreciate the local food culture. Additionally, under the same culinary umbrella, the recently opened "Kum Kaen Kam" restaurant, located near the airport in the city center, offers an expanded capacity to accommodate more guests.



### MICE Checklist

- Maximum capacity: 20 pax
- Availability for organizing workshop cooking classes.



### Contact

78 Tambon Ban Thum, Mueang Khon Kaen District, Khon Kaen Province, 40000

☎ +66 9 8909 8909,

+66 9 1742 9978

📍 เวียดนาม (Only in Thai)





## CoCo Rabbit

A contemporary Thai dessert café in a homemade style, utilizing local Thai ingredients to create quality and innovative dishes. Signature dishes include crispy rice cakes, horse's hoof cake, golden desserts, creamy coconut pudding, floating lotus dumplings, soft sweet treats, caramel coconut ice cream, Thai tea coconut ice cream, and more.



### MICE Checklist

- Maximum capacity: 10 pax
- Ability to organize off-site brochure and catering services.



### Contact

Kanlapaphruek Road, Mueang  
Khon Kaen District, Khon Kaen  
Province, 40000

+66 6 4879 2777

☎ กระต่ายขูดมะพร้าว (Only in Thai)

# Nai Chan Coffee Plantation X Faffeine Cafe

Few would expect that Khon Kaen is capable of cultivating coffee. Nestled within a rubber plantation spanning over 10 Rai, this unique cafe is surrounded by natural sounds of birds, insects, and rustling leaves. Its stylish design, crafted by a young architect owner, stands out against the backdrop of rubber trees. Amidst the plantation, one can spot 1,200 Arabica coffee plants arranged in alternating rows, providing shade for the cafe.



## MICE Checklist

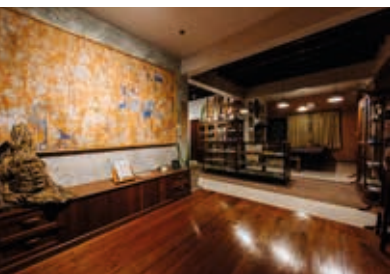
- Maximum capacity: 20 pax
- Suitable for small group meetings
- Able to organize off-site breakout sessions and conduct marketing collateral distribution



## Contact

14/1 Moo 5, Tambon Ban Kong,  
Nong Ruea District,  
Khon Kaen Province, 40240  
☎ +66 6 5654 9785  
☎ โร้กาอูฟฟายจันท์ X Faffeine  
Cafe (Only in Thai)





## Sinxay Heritage House

The mansion has been transformed into a private museum, housing multifaceted information about Sinxay, the renowned literary heritage of the Northeastern region and Utsahakanya. It connects narratives and storylines related to Sinxay to the realm of wellness workshops, promoting mental health relaxation, mindfulness, and linking nature, culture, art, therapy, traditional music, acoustic performances, and featuring a coffee bar serving aromatic local brews as a welcoming gesture.



### MICE Checklist

- Maximum capacity: 30 pax
- Museum for learning about Sin Sai literature
- Small meeting room available
- Outdoor space for activities



### Contact

257 Moo 17, Tambon Sila,  
Mueang Khon Kaen District,  
Khon Kaen Province, 40000  
☎ +66 8 9499 2256  
📞 โถงสิขัย (Only in Thai)



# Isan Cubism

Isan Cubism is an art form that has evolved from the cultural heritage of the northeastern region of Thailand, known as Isan. It incorporates elements such as traditional fabric weaving, woodwork, and folk art motifs to create captivating geometric patterns. Visitors can also participate in workshops to create their own color-dotted artwork or choose from a variety of meaningful souvenirs.



## MICE Checklist

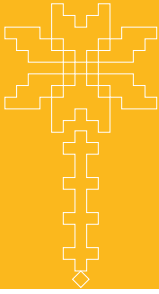
- Maximum capacity : 20 pax
- Small meeting room available
- Space for workshops



## Contact

14/41 Moo 6, Tambon Nai  
Mueang, Mueang Khon Kaen  
District, Khon Kaen Province,  
40000  
☎ +66 9 4414 6287, +66 6 1192  
2461, +66 8 1632 3143  
f ISAN Cubism





## 1 Avani Khon Kaen Hotel & Convention Centre

999 Moo 4, Prachasamosorn Road, Tambon Nai Mueang, Mueang Khon Kaen District, Khon Kaen 40000

- ☎ : +66 4320 9888
- 📞 : +66 4320 9889
- ✉ : khonkaen@avanihotels.com
- 🌐 : www.avanihotels.com/en/khon-kaen

## 2 Adlib Khon Kaen

999 Srichan Road, Tambon Nai Mueang, Mueang Khon Kaen District, Khon Kaen 40000

- ☎ : +66 4310 0555
- ✉ : khonkaen@adlibhotels.co
- 🌐 : https://www.adlibhotels.co/khon-kaen/

## 3 Chareon Thani Khon Kaen

260 Srichan Road, Mueang Khon Kaen District, Khon Kaen 40000

- ☎ : +66 4322 0400-14
- 📞 : +66 4322 438
- ✉ : saleskk@charoenthani-kk.com
- 🌐 : charoenthanihotel.com

## 4 Kosa Hotel

250-252 Srichan Road, Tambon Nai Mueang, Mueang Khon Kaen District, Khon Kaen 40000

- ☎ : +66 4332 0320, +66 8 3357 7171
- 📞 : +66 4322 5013
- ✉ : kosahotelkhonkaen@gmail.com
- 🌐 : www.kosahotel.com

## 5 Le Cassia Hotel

68 Pimpasut Road, Tambon Nai Mueang, Mueang Khon Kaen District, Khon Kaen 40000

- ☎ : +66 4333 3666, +66 4324 2222, +66 9 6154 1817
- ✉ : lecassiakk@gmail.com
- 🌐 : www.lecassiahotel.com

## 6 Pullman Khon Kaen Raja Orchid

9/9 Prachasumran Road, Tambon Nai Mueang, Mueang Khon Kaen District, Khon Kaen 40000

- ☎ : +66 4391 3333
- 📞 : +66 4391 3334
- ✉ : pullman@pullmankhonkaen.com
- 🌐 : www.all.accor.com/1877

## 7 Rachawadee Resort and Hotel

99 Moo 20, Khon Kaen Airport Road, Tambon Banped, Mueang Khon Kaen District, Khon Kaen 40000

- ☎ : +66 4346 8222
- 📞 : +66 4346 8330
- ✉ : info@rachawadeehotel.com
- 🌐 : www.rachawadeehotel.com

## 8 Gallery Lake View Hotel

135/101 Rob Bueng Road, Mueang Khon Kaen District, Khon Kaen 40000

- ☎ : +66 9 1770 6555
- ✉ : gallerylakeview@hotmail.com
- 🌐 : https://www.facebook.com/gallerylakeview/

# Hotel Directory

## KHON KAEN

### 9 Green Hotel & Resort

179/160 Soi Prachasamosorn 38, Prachasamosorn Road, Mueang Khon Kaen District, Khon Kaen 40000

- ☎ : +66 4324 7222, +66 8 8551 5179
- ✉ : greenhotelandconvention@gmail.com
- 🌐 : www.greenhotelkhonkaen.com

### 10 Inpawa Hotel

922 Sukapiban 2 Road, Ban Phai District, Khon Kaen 40110

- ☎ : +66 4327 2333
- ☎ : +66 4327 3123
- ✉ : info@inpawahotel.com
- 🌐 : https://www.inpawahotel.com/

### 11 The Charm Boutique Resort

222/8 Moo 14 Soi Aduyaram, Mittraphap Road, Mueang Khon Kaen District, Khon Kaen 40000

- ☎ : +66 4334 7111
- ✉ : rsvn\_thecharmresort@hotmail.com
- 🌐 : https://www.facebook.com/thecharmresort/

### 12 The Cheewin Hotel & Convention

333 Moo 8 The Cheewin Hotel and Convention, Maliwan Road, Tambon Chum Phae, Chum Phae District, Khon Kaen 40130

- ☎ : +66 4331 3333, +66 4331 1578, +66 9 5186 0717
- ✉ : thecheewinhotel@gmail.com
- 🌐 : https://thecheewinhotel.com/

### 13 Major Grand Hotel

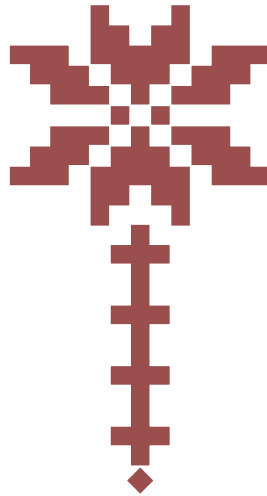
1 Moo 10 Chum Phae-Phu Khiao Road, Tambon Chaisor, Chum Phae District, Khon Kaen 40130

- ☎ : +66 4331 1333, +66 4331 1666
- ✉ : contactus@majorgrand.com
- 🌐 : https://www.majorgrand.com/main.html

### 14 Leelawalai Rest Hotel

888 Tambon Chaisor, Chum Phae District, Khon Kaen 40130

- ☎ : +66 6 1694 2644
- ✉ : nuk.kung@hotmail.com







THAILAND  
**MICE**  
มนต์เสน่ห์สู่ความสำเร็จ

